

FOSTERING TRUST BETWEEN TAXPAYERS AND GOVERNMENT

*Through the ArcGIS® HubSM
Equitable Property Value Initiative*

Esri in Partnership with Pro-West & Associates



PROWEST
& Associates



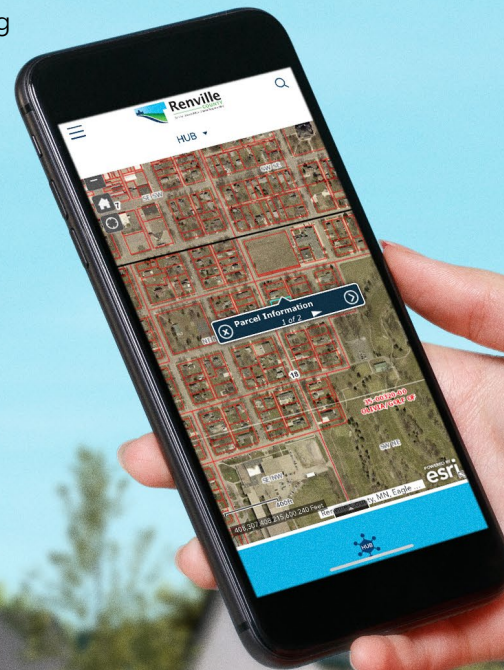
The property and parcel data you manage is extremely valuable to you, other departments, and your community only when it is accessible and can answer common questions. Transparency is paramount, and GIS helps governments achieve their transparency initiatives.



IMPROVEMENTS IN ENSURING TRUST AND TRANSPARENCY WITH TAXPAYERS

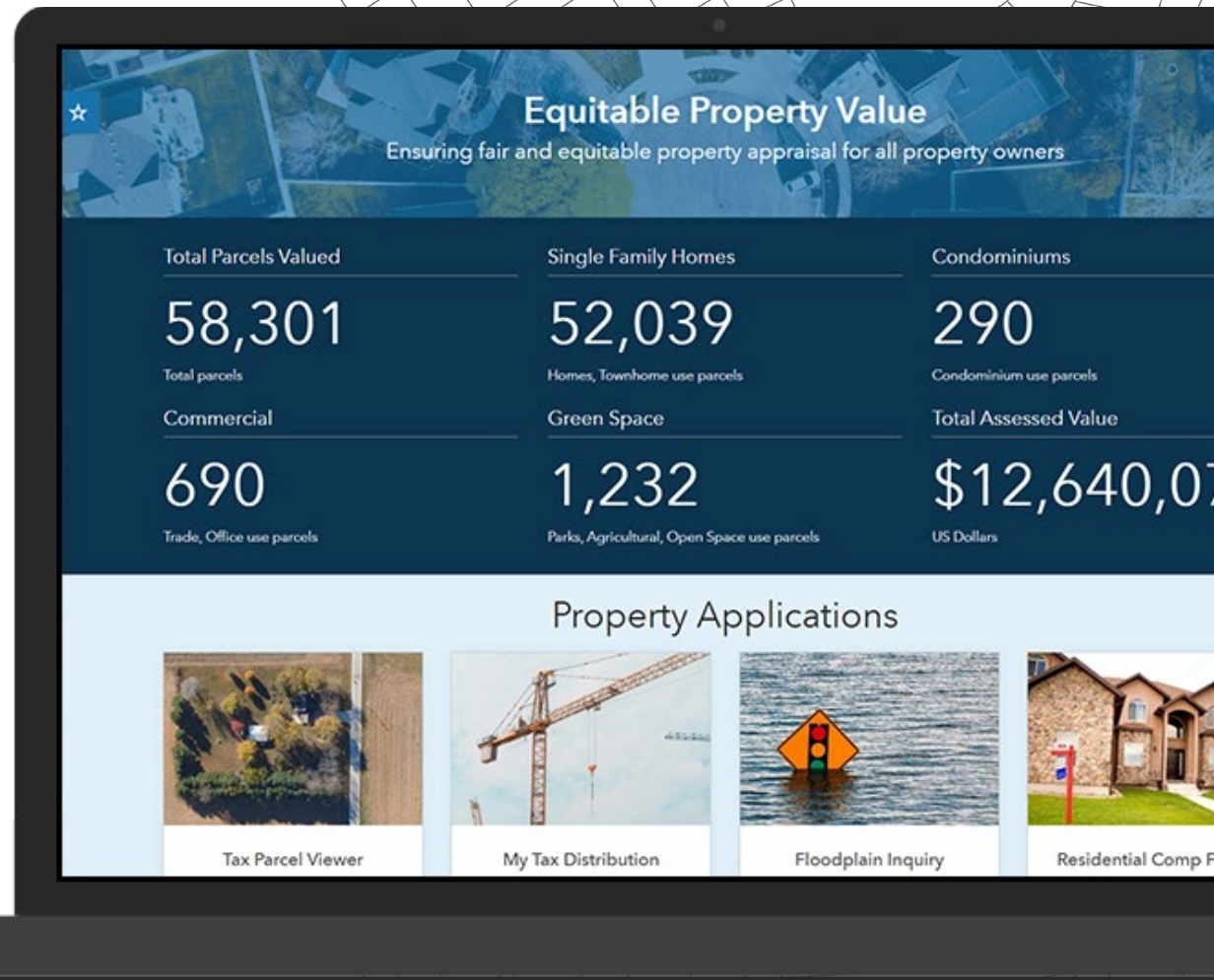
Today, citizens, taxpayers, and the public expect detailed, authoritative property information to be quick to find, easy to understand, and available on any device. Delivering accurate and current information improves public trust and confidence and supports open data initiatives while decreasing taxpayer complaints and appeals. Having a geographic information system (GIS) technology-centric community engagement platform that organizes property valuation information, parcel data, and other necessary information and that is easy to understand is what taxpayers want and governments need to deliver.

In many jurisdictions, up to 70 percent of the local government budget comes from some form of property tax, funds used to deliver critical government services. This makes it necessary to educate and inform taxpayers on how property values are determined and how values are being affected in a dynamic property market. Embracing GIS to inform the stakeholders in your community brings new opportunities to the assessor's office, such as easy-to-use web maps and apps that reduce appeals, open communication with taxpayers, and collaboration across the organization and with your stakeholders.



A TRANSFORMATIONAL SOLUTION FOR ASSESSORS

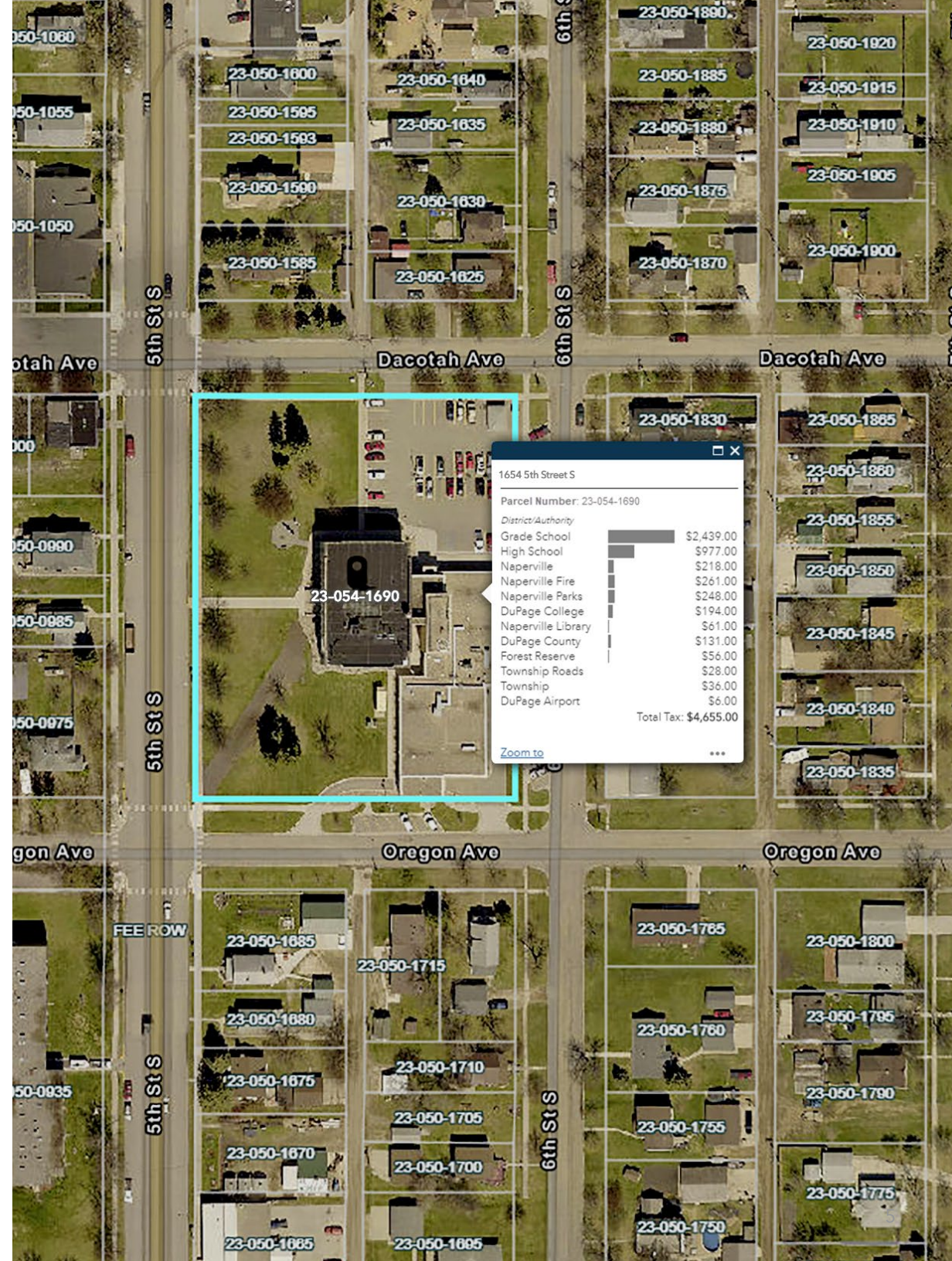
The ArcGIS® HubSM Premium Equitable Property Value initiative offers a public-facing geography-based web platform optimized for communicating key information and timelines for the property valuation. This initiative is a software-as-a-service (SaaS) offering that enables efficiencies and new capabilities that are cost-effective and delivered to scale. It allows you to rethink the way you interact and connect with other government departments and the public. ArcGIS Hub Premium is configured to organize your valuation and parcel data, accomplish organizational initiatives, and deliver on your organization's stakeholder outreach goals in a single, cloud-based experience.



Deploying Esri's Equitable Property Value initiative delivers the following:

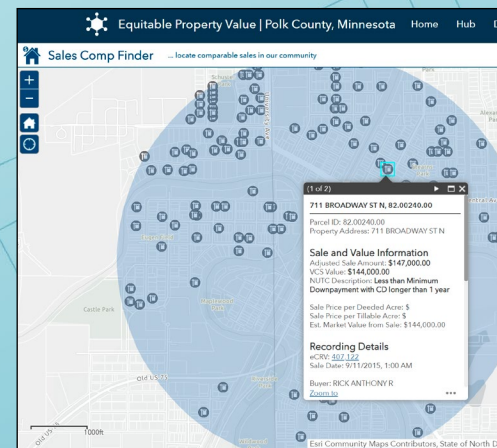
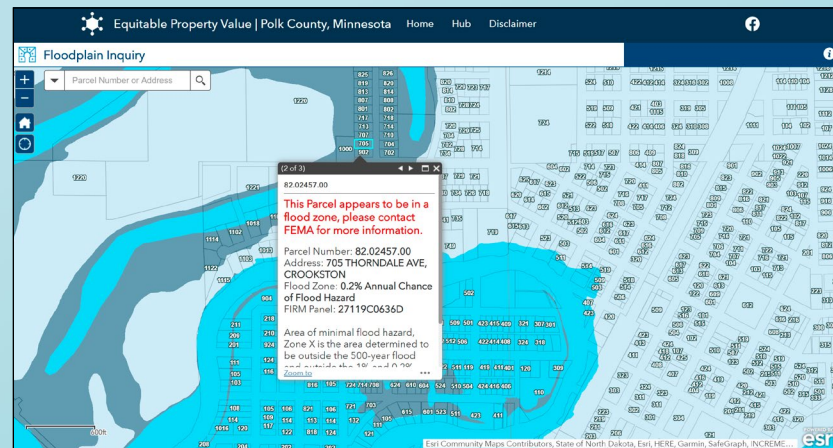
- Increased public awareness
- Improved public and government access to property information
- Enhanced taxpayer understanding of the assessment process and property tax
- Focused property information products for taxpayers, real estate professionals, and potential new property owners
- Simplified communication of upcoming events and notifications to citizens
- A web-based process to respond to appeals while educating taxpayers
- Summary statistics on your jurisdiction
- Valuable population data used to enrich your analysis

This transformational solution allows assessors to inform citizens of the work they do understandably and set a foundation of connectivity with their community for the future.





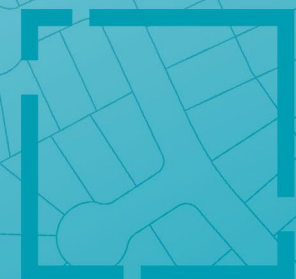
Advantages of Connecting Taxpayers and Government through GIS

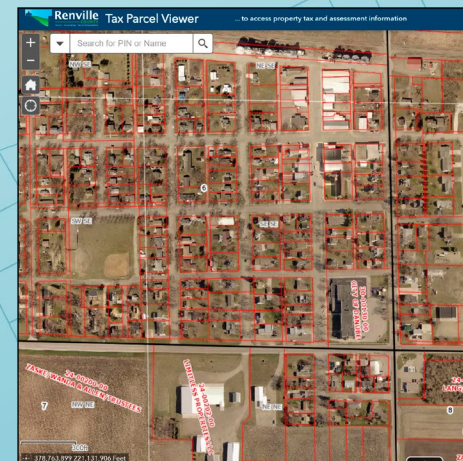


EDUCATING RESIDENTS IN POLK COUNTY, MINNESOTA

Taxpayers get a 360-degree view of the information related to their property, and access to recorded documents, comparable property sales, and tax dollar distribution is seamless in the Equitable Property Value hub site.

Mapping applications make it simple for citizens to look up and understand landownership and where activities are occurring. Polk County continues to improve its services to citizens, leveraging the Equitable Property Value hub site to connect citizens with the county's authoritative land records data.

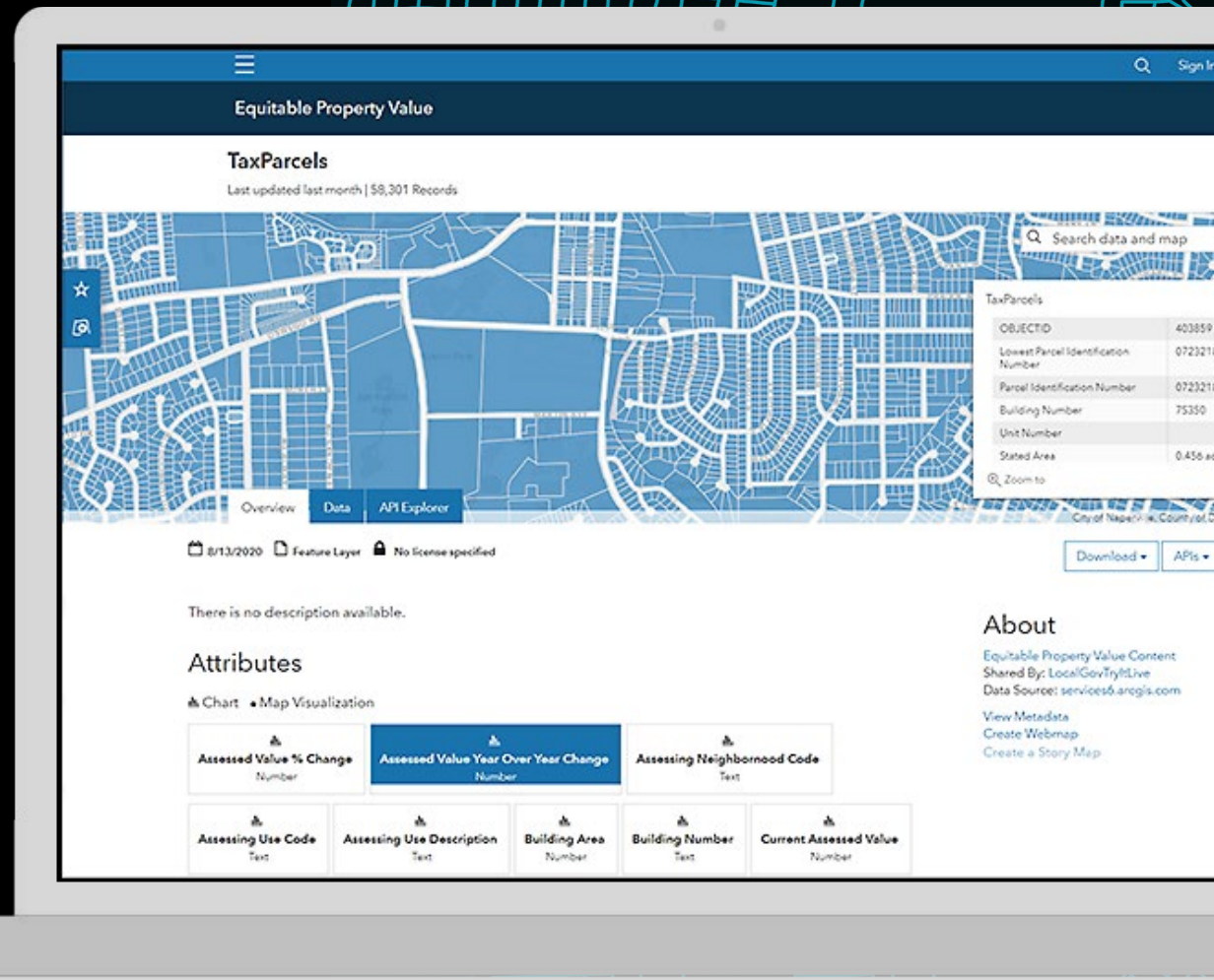




To enhance the self-service experience, Renville County integrated its document management system with GIS. All recorded documents connected to a property can be accessed via an app on smartphones. Thus, taxpayers in Renville County have self-service access to a complete and transparent view of property information. **With the Hub platform, the county has been able to grow its taxpayer self-service offering to share valuable land record documents.**

ENABLING COLLABORATION AND SHARING OF DATA

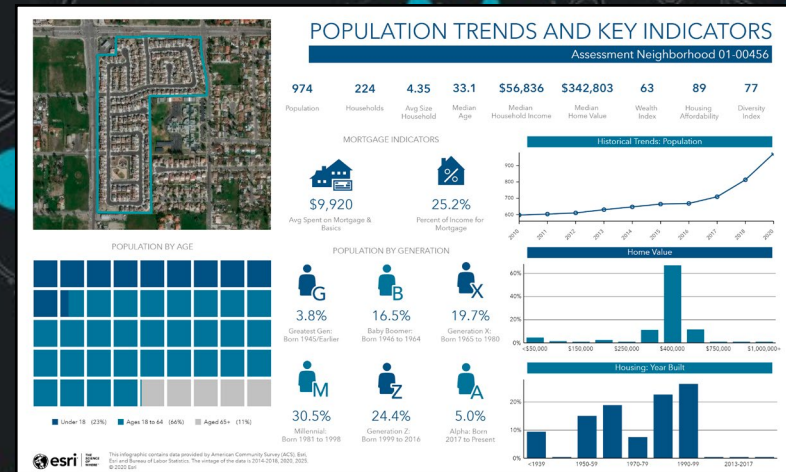
The Equitable Property Value initiative makes it easy to create teams comprising staff, external community members, or both. Invite trusted members of government organizations to collaborate and work with the authoritative data that your staff collects and manages. The parcel and valuation datasets are as important to you as these are for other departments such as emergency management and planning. By hosting the data, staff can securely provide a direct access point to the foundational data that helps other departments improve their work. For anyone choosing a neighborhood to live in and are curious about recent sales data or wanting to do their own property analysis, you can easily deliver the information they need.



TRULY UNDERSTAND YOUR COMMUNITY AND ENRICH YOUR DATA

With access to more than 15,000 variables, you can augment your data to refine results and better understand which variables have more impact. You can create preconfigured reports and infographics that you could share internally or include in your community's Equitable Property Value initiative hub site to inform and add insight.

While you see and manage the results from sales, foreclosures, and changes in values, ArcGIS provides additional data to better understand why those patterns are occurring, help address key community issues, and inform taxpayers.





EVERY COMMUNITY IS DIFFERENT

The ArcGIS Hub Premium Equitable Property Value initiative is configurable to meet your organizational and stakeholder needs. Add an infographic about your community. Embed an ArcGIS StoryMapsSM narrative about how you value property. Provide self-service applications with easy-to-use web maps. Include your county or city logo, match your brand, and make it yours. The ability to increase public trust and confidence in your office is now available.





How to Get Started

ESRI AND PRO-WEST & ASSOCIATES PARTNERSHIP

Access to technical resources—whether it be technical skills or software—vary. Esri has teamed with Pro-West & Associates to deliver software and implementation services for the ArcGIS Hub Premium Equitable Property Value initiative. A quick assessment of your organization's goals and capabilities will determine the best strategy to modernize your assessor's office public engagement strategy.

For more information on how to get started, visit go.esri.com/Pro-West-EPVHub.

An Esri Gold partner for the past 30 years, Pro-West & Associates provides GIS consulting, data services, application development, solution configuration, integration, and system architecture services to government and commercial organizations to help them succeed with location technology.

Pro-West holds Esri specialty designations for ArcGIS Hub, ArcGIS Solutions for Local Government, Federal Small Business, and ArcGIS Online and has a team of Esri certified professionals, certified GIS professionals, and project management professionals ready to help your organization deploy the ArcGIS Hub Premium Equitable Property Value initiative today.

PROWEST
& Associates



WHAT'S INCLUDED

Pro-West & Associates offers assessors and land records organizations access to the following ArcGIS technology:

ArcGIS Hub Premium

- Equitable Property Value initiative

ArcGIS Online

- One ArcGIS Online community account
- Creator user type (qty. 100)
- Annual service credits (qty. 10,000)

The following are also included in the offer:

ArcGIS public-facing applications that help taxpayers search for additional property information

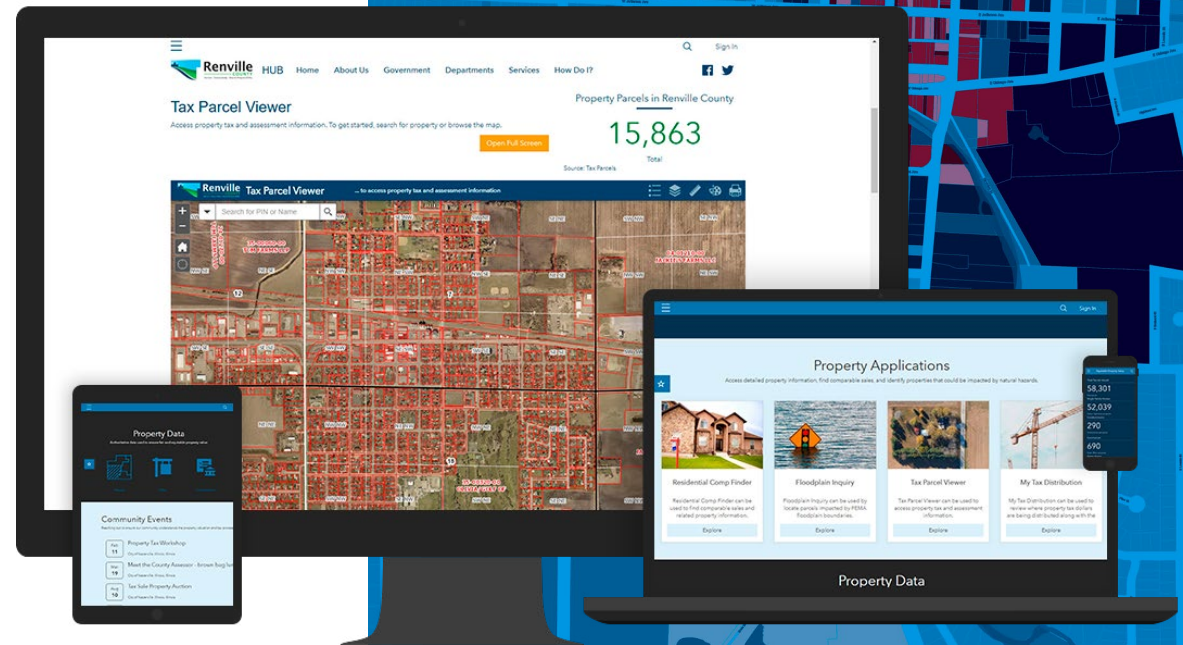
- Floodplain Inquiry
- Tax Parcel Viewer
- Property Tax Assessment Appeal
- My Tax Distribution
- Residential Comp Finder

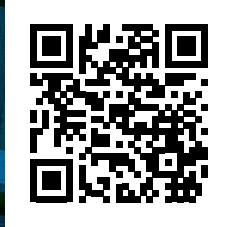
Essential applications

- ArcGIS StoryMaps
- ArcGIS Survey123
- ArcGIS Open Data
- ArcGIS Dashboards
- ArcGIS Community AnalystSM

One complimentary Esri User Conference registration

Unlimited e-Learning training





esri®

THE
SCIENCE
OF
WHERE®

go.esri.com/Pro-West-EPVHub

Copyright © 2020 Esri. All rights reserved. Esri, the Esri globe logo, ArcGIS, Hub, Community Analyst, StoryMaps, The Science of Where, and esri.com are trademarks, service marks, or registered marks of Esri in the United States, the European Community, or certain other jurisdictions. Other companies and products or services mentioned herein may be trademarks, service marks, or registered marks of their respective mark owners.

G1262027